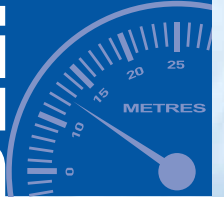


**DEEPBLUE  
SCUBA**



Prices Correct at January 2009

## **EFR INSTRUCTOR COURSE INFORMATION**

**deepbluescuba.co.uk** : delivering diving dreams



The Emergency First Response Instructor Courses provides you with the additional training necessary to teach the Emergency First Response Primary Care (CPR), Secondary Care (First Aid) and Care for Children Courses.

The courses build on your skills as a primary and secondary care provider and focus on developing your instructional abilities. Through independent study, classroom sessions and practice teaching assignments, you will learn how to conduct the Emergency First Response programme.

## Emergency First Response Instructor Course

This course teaches you how to conduct the EFR Primary and Secondary Care courses.

The course focuses on teaching CPR, first aid and choking with an introduction to oxygen provision and automated external de-fibrillation for adult patients. You will develop role model CPR and first aid skills and teaching abilities whilst looking at successfully promoting and marketing the courses.

## Care for Children Instructor Course

This course teaches you how to conduct the EFR Care for Children course.

The course focuses on teaching CPR, first aid and choking with an introduction to oxygen provision and automated external de-fibrillation for child and infant patients. Again you will develop role model CPR and first aid skills and teaching abilities whilst looking at successfully promoting and marketing the courses.



## What are the course pre-requisites?

Be 18 years of age or older.

Have completed EFR Primary Care, Secondary Care and Care for Children courses (or equivalent qualifications) within the past 24 months.

## How long does it take to compete?

The EFR Primary Care, Secondary Care and Care for Children courses take 2 days to complete. If you only need to complete the EFR Care for Children course this will take 1 day.

Please note that you cannot complete the EFR Primary and Secondary Care course without also completing the Care for Children course.

## How much do the courses cost?

EFR Primary Care, Secondary Care and Care for Children courses cost £200. If you only need to complete the Care and Care for Children course this costs £100

## Are there any additional costs?

	Member Price	Candidate Price
EFR (including CFC) instructor manual	£34.09	£24.54
DVD – EFR	£17.98	£12.95
DVD – CFC	£17.98	£12.95

The application fee to Emergency First Response Corporation is not included in the course price this is currently £82.83 for EFR Primary Care and Secondary Care and £33.50 for Care for Children.

The course materials can be purchased from Deep Blue Scuba at the above special candidate price.

## How is the course scheduled?

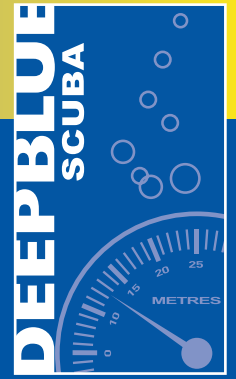
As the EFR courses are classroom based the schedule is flexible. If you are unable to complete the courses during the day evening sessions can be arranged.

For available dates please contact the office on 0845 838 7785 or at [info@deepbluescuba.co.uk](mailto:info@deepbluescuba.co.uk).

If you have any questions about the EFR Primary Care, Secondary Care and Care for Children courses please contact using the above details.



# ABOUT DEEP BLUE SCUBA



Deep Blue Scuba is a 5 Star PADI IDC (Instructor Development Course) dive centre, meaning that we meet PADI's stringent requirements in the courses and experiences that we offer. We offer taster experiences through formative dive courses (Open Water, Advanced Open Water, Speciality Diver and Rescue Diver) to leadership level (Divemaster) and Instructor level courses.

We have a wealth of experience and have taught hundreds of people from diverse backgrounds and ability levels, to dive. We have experience working with children, young adults and those with physical restrictions. All of the staff, working with children, are Disclosure Scotland checked.

The staff are passionate divers and truly enjoy the opportunity to introduce people to the underwater world.

## Deep Blue Scuba

t/f: 0845 838 7785

m: 07904 139 259

e: [info@deepbluescuba.co.uk](mailto:info@deepbluescuba.co.uk)

[www.deepbluescuba.co.uk](http://www.deepbluescuba.co.uk)

## DEEP BLUE ADVENTURES

Deep Blue Scuba Adventures is a PADI Diving Society affiliated dive club. Through the club you will have the opportunity to meet new people, do new things and go new places. We meet monthly and throughout the year have social events including: beach clean ups, beach BBQs, shark dives, hyperbaric chamber visits and marine mammal awareness courses. The club also organises a number of UK and Overseas dive trips, so you can put your new skills into practice and explore the various wonders of the underwater world.